



**THE RANGE  
OF GLOBALLY  
ACCLAIMED  
TRANSFORMERS**

# YOUR SEARCH FOR EXCELLENCE ENDS HERE

Welcome to **KALPA ELECTRIKAL**, your number one source for all Transformer needs. We're dedicated to giving you the very best of Instrument Transformers, Control, Power, Distribution Transformers and Line Chokes, with a focus on Quality, Cost, Delivery and Service.

Our perseverance towards quality and business ethics has earned us a trustworthy position in the market. Thanks to our professional approach, we have been able to maintain long-term relationships with our esteemed clients.

## HOW DO WE WORK: ADDING VALUE

- ⚡ Most ethical way of transacting
- ⚡ Superior quality products with quicker deliveries
- ⚡ Forward and Backward Integration for better customer experience
- ⚡ End-to-end solutions
- ⚡ Over 100 CPRI Certified Products
- ⚡ Educating customers, creating the most tailored solution



### MISSION:

To manufacture world class range of electrical transformers which will meet global standards and customer needs with a strong focus on quality.



### VISION:

Be a global vendor of choice for electrical transformers with a wide range of product lines, providing full and efficient solutions.



### LEADERSHIP:

KALPA's leadership team draws on decades of experience to chart a course for the future and guide the company towards its strategic goals.

#### **Ramesha Subbanna** Managing Director

A dynamic and dedicated Industrialist with multidimensional skills, leading the organization from a very young age along with his brother. The Second generation entrepreneurs growing KALPA to 10X levels. A man of principles, his keen business acumen, global perspective and innovative streak coupled with strong determination, hastened KALPA on the path to economic success. Ramesha's decades of leadership experience include improving customer experience, advanced products and scaling global marketplaces. His vision and focus is on developing the organization to become a global choice of vendor for Transformer products.

#### **Swamiji (Sureshan Subbanna)** Director - Operations & Finance

He's an engineer by profession, elder son of the family and heading the organization with his brother. His background of marketing and design makes him to recognize opportunities, make smart business decisions, and foster a creative environment for day-to-day operations. His focus is on improving the efficiency by addressing the non-value added activities in the system, setting up automated process to ensure high quality product is delivered to customers.

He's also inheriting the spiritual path laid over by his ancestors, motivating and empowering people with his divine and spiritual thoughts. He's engaged himself with SERVICE to the community by running a non-profit organization which offers food, spiritual, health, education programs.

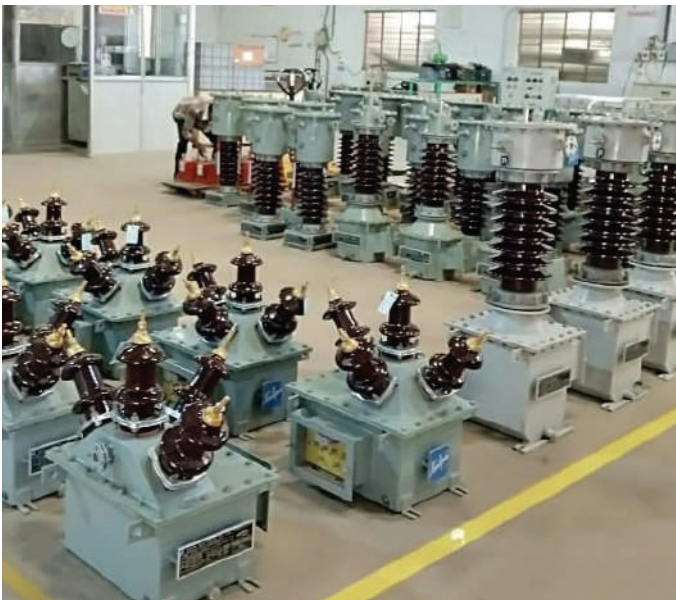
#### **Somashekar T S** CEO

After graduating from college with a gold medal degree in Electrical Engineering, Somashekar quickly got his feet wet in the world of Transformer design. With two decades of experience in KALPA, he's at par with the Directors, splitting his time between helping Managing Director & Director run KALPA and providing technical consulting to our largest customers. With a keen eye for detail, he keeps the team on course and ensures our work is up to KALPA's high standards. He's a reliable and dedicated soul who keeps his teams energy high with his kind heart and guiding them towards the organizational goals.

## MANUFACTURING FACILITIES: MAKE IN INDIA

Our state-of-the-art manufacturing facilities spreading over a total area of about 10000 m<sup>2</sup> are based at Rajajinagar & Machohalli in Bengaluru, Karnataka, India. We manufacture a wide range of LV & MV Instrument Transformers for Indoor & Outdoor applications, Dry Type Control, Power Transformers, Oil-filled Distribution Transformers, Line Chokes/Reactors and Special Application Transformers.

The modern in-house manufacturing facilities with capabilities for Designing & Engineering, Manufacturing and Testing of Transformers ensure highest product quality standards. Our manufacturing techniques ensure efficient and time saving method of manufacturing to meet customer requirements on a shorter lead time.



## FOCUSING ON WORKMANSHIP IMPROVEMENT, WOMEN EMPOWERMENT AND MANUFACTURING EXCELLENT PRODUCTS

The good quality of every KALPA product depends on not only cutting-edge manufacturing tools, but also on the dedicated workmanship of operators and their knowledge and experience as well as outsourcing parts with same quality standards. The skill improvement, knowledge sharing and training of its staff and suppliers' staff allows KALPA to keep growing with a good team by creating quality products and satisfied customers.



## SOLUTIONS

KALPA Elektrikal has expertise in custom designing transformers for unique and challenging applications requiring tight space considerations; applications for round-the-clock, reliable operation in harsh conditions; applications where minimal load losses were absolutely essential. KALPA met those challenges and has met thousands of challenges since then, to the point where our name is synonymous with providing innovative, cost-efficient solutions for power distribution.

## Most Efficient and Energy Saving Transformers For Various Applications:

- ⚡ Metering & Protection - Switchgears
- ⚡ Utilities, PSU's, DISCOMS, Electricity Boards
- ⚡ Hydro, Thermal, Solar & Wind
- ⚡ Oil & Gas, Mining, Cement, Steel, Transit
- ⚡ Offices, Commercial Spaces, Data Centers
- ⚡ Marine Duty Applications
- ⚡ Special Application Transformers
- ⚡ Transformer Service Solutions



## Moulded Case Current Transformers

### Applications

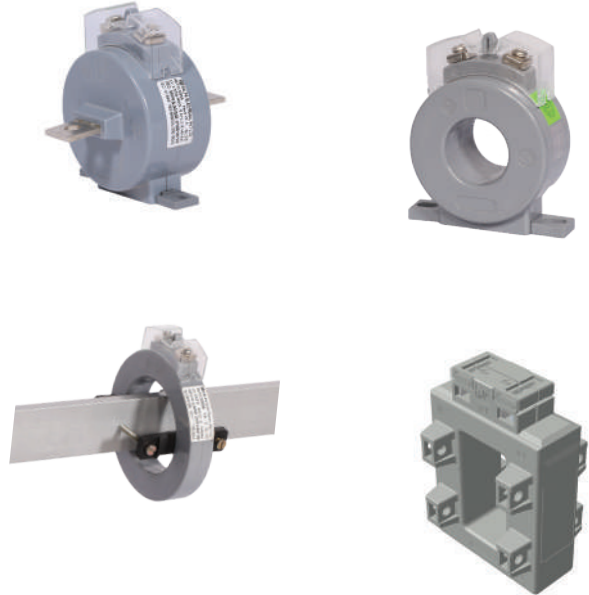
For use with Metering Applications and Utility Meters

### Features

- Encapsulated in Polycarbonate Casing
- Wide Range of Specifications
- Ratios up to 7500 Amps
- 1 Amp and 5 Amp Secondaries are Available
- Designed as per IS/IEC/ANSI Standards
- Busbar Mounting or Mounting Clamps or Dinrail available.

### Types

- Bar Primary Type
- Window Type Ring or Rectangular



## Resin Cast Current Transformers

### Applications

For metering and relaying applications in low voltage switchboards and switchgear. For use with ammeters in panelboards and control panels.

### Features

- Encapsulated in Epoxy Resin
- Wide Range of Specifications
- Designed for Indoor Purpose
- Ratios up to 10000 Amps
- 1 Amp and 5 Amp Secondaries are Available
- Designed as per IS/IEC/ANSI Standards
- Supplied with Terminals or Studs
- Busbar Mounting or Mounting Clamps Available
- Available with Multi Core and Multi Tappings

### Types

- Wound Primary Type
- Bar Primary Type
- Window Type Ring or Rectangular





## Tape Insulated Current Transformers

### Applications

For metering and relaying applications in low voltage switchboards and switchgear and utility meters

### Features

- Insulated with PVC Tape/Nylon Tape/Fiber Glass Tape
- Wide Range of Specifications
- Designed for Indoor Purpose
- Ratios up to 10000 Amps
- 1 Amp and 5 Amp Secondaries are Available
- Designed as per IS/IEC/ANSI Standards
- Supplied with Terminals or Studs
- Busbar Mounting or Mounting Clamps Available
- Available with Multi Core and Multi Tappings

### Types

- Wound Primary Type
- Window Type Ring or Rectangular



## Bushing Current Transformers

### Applications

For use with Protection Applications in Transformers

### Features

- Insulated with Cotton Tape or Encapsulated in Epoxy Resin
- Wide Range of Specifications
- Ratios up to 10000 Amps
- Secondary Current as per Customer Requirement
- Designed as per IS/IEC/ANSI Standards

### Types

- Window Type-Ring or Rectangular



# ⚡ LV VOLTAGE TRANSFORMERS



## Applications

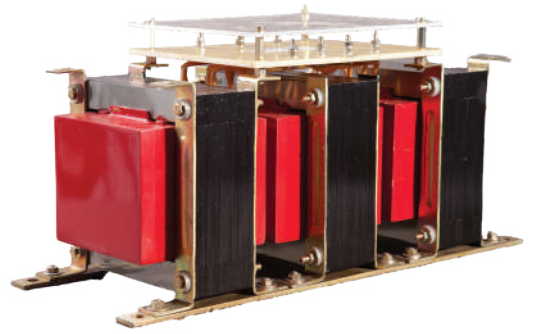
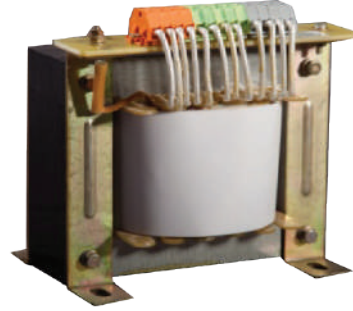
Suitable for operation meters, instrument transformers, relays, control devices and utility metering.

## Features

- Available in Single Phase and 3 Phase
- Encapsulated in Epoxy Resin Cast or VPI
- Integral Fuses Available as per Customer Applications
- Designed as per IS/IEC/ANSI Standards
- Supplied with Terminal Blocks or Studs
- Available for Line-to-line Applications and for Line-to-ground Applications

## Types

- One End Earthed Type (E-N)
- UN Earthed Type (U-N)



# ⚡ LOW VOLTAGE CONTROL TRANSFORMERS



## Applications

Designed for industrial applications where electromagnetic devices such as relays and solenoids are used, the control transformer maximizes inrush capability and output voltage regulation when electromagnetic devices are initially energized.

## Features

- Available in Single Phase and 3 Phase
- Encapsulated in Epoxy Resin Cast or VPI
- Integral Fuses Available as per Customer Applications
- Designed as per IS/IEC/ANSI Standards
- Supplied with Terminal Blocks or Studs





## Indoor Current Transformers

### Applications

Indoor current transformers for metering and relaying applications in AC power systems.

### Features

- Vacuum Cast Epoxy Resin/Pressure Gelation System
- Wide Range of Specifications
- System Voltage from up to 36 kV
- Ratios up to 10000 Amps
- 1 Amp and 5 Amp Secondaries are Available
- Designed as per IS/IEC/ANSI Standards
- Available with Multi Core and Multi Tappings

### Types

- Wound Primary Type
- Bar Primary Type
- Window Type-Ring or Rectangular



## Indoor Voltage Transformers

### Applications

Voltage transformer which is intended to have one end of its primary winding directly earthed (E-N) or Un earthed (U-N). These are suitable for the current air insulated switchgear portfolio, OEM partners, utilities and many others.

### Features

- Vacuum Cast Epoxy Resin/Pressure Gelation System
- Wide Range of Specifications
- System Voltage from up to 36 kV
- Primary Voltage up to 33000V/RT3
- 110/RT3V, 110/3V and 110V secondaries are available
- Designed as per IS/IEC/ANSI Standards.
- Integral Fuses Available as per Customer Applications
- Drawout Type Available

### Types

- One End Earthed Type (E-N)
- UN Earthed Type (U-N)



# ⚡ MEDIUM VOLTAGE OUTDOOR DRY TYPE INSTRUMENT TRANSFORMERS



## Outdoor Cycloaliphatic Current Transformers

### Applications

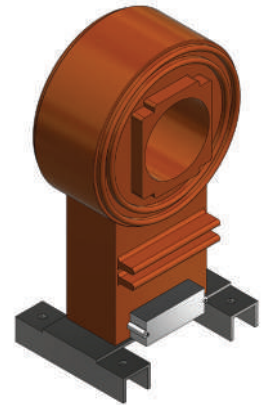
Designed for outdoor service in highly polluted areas. Suitable for operating meters, instruments, relays and control devices.

### Features

- Cycloaliphatic Epoxy Encapsulation/ Pressure Gelation System
- Wide Range of Specifications
- System Voltage from up to 36 kV
- Ratios up to 10000 Amps
- 1 Amp and 5 Amp Secondaries are Available
- Designed as per IS/IEC/ANSI Standards
- Available with Multi Core and Multi Tappings
- Engraved Alluminium Name Plate

### Types

- Wound Primary Type
- Window Type-Ring or Rectangular



## Outdoor Cycloaliphatic Voltage Transformers

### Applications

Designed for outdoor service in highly polluted areas. Suitable for operating meters, instruments, relays and control devices.

### Features

- Vacuum Cast Cycloaliphatic Resin/ Pressure Gelation System
- Wide range of Specifications
- System Voltage from up to 36 kV
- Primary Voltage up to 33000 V/RT3
- 110/RT3V, 110/3V and 110V secondaries are available
- Designed as per IS/IEC/ANSI Standards

### Types

- One End Earthed Type (E-N)
- UN Earthed Type (U-N)





# ⚡ MEDIUM VOLTAGE OUTDOOR OIL-FILLED INSTRUMENT TRANSFORMERS



## Outdoor Oil-Filled Current Transformers

### Applications

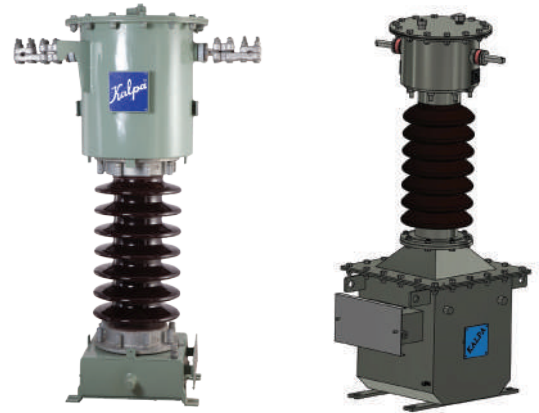
Designed for outdoor service in highly polluted areas. Suitable for operating meters, instruments, relays and control devices.

### Features

- Oil-Insulated Paper
- Wide Range of Specifications
- Designed for Outdoor Purpose
- Ratios up to 3000 Amps
- 1 Amp and 5 Amp Secondaries are Available
- Designed as per IS/IEC/ANSI Standards
- Available with Multi Core and Multi Tappings
- Engraved Alluminium Name Plate

### Types

- Live Tank
- Dead Tank



## Outdoor Oil-Filled Voltage Transformers

### Applications

Designed for outdoor service in highly polluted areas. Suitable for operating meters, instruments, relays and control devices.

### Features

- Oil-Insulated Paper
- Wide Range of Specifications
- System Voltage from up to 36 kV
- Available in Single Phase and 3 Phase
- Primary Voltage up to 33000V/RT3
- 110/RT3V, 110/3V and 110V Secondaries are Available
- Designed as per IS/IEC/ANSI Standards

### Types

- One End Earthed Type (E-N)
- UN Earthed Type (U-N)



# ⚡ MV OUTDOOR OIL-FILLED COMBINED CTPT



## Applications

Designed for outdoor service in highly polluted areas. Suitable for operating meters, instruments, relays and control devices.

## Features

- Oil-Insulated Paper
- Wide Range of Specifications
- System Voltage from up to 36 kV
- Ratios up to 3000 Amps
- 1 Amp and 5 Amp Secondaries are Available
- Primary Voltage up to 33000V/RT3
- 110/RT3V, 110/3V and 110V Secondaries are Available
- Designed as per IS/IEC/ANSI Standards
- Available with Multi Core, Multi Winding and Multi Appings
- Engraved Alluminium Name Plate

## Types

- One End Earthed Type (E-N)
- UN Earthed Type (U-N)



# ⚡ LINE CHOKES AND REACTORS

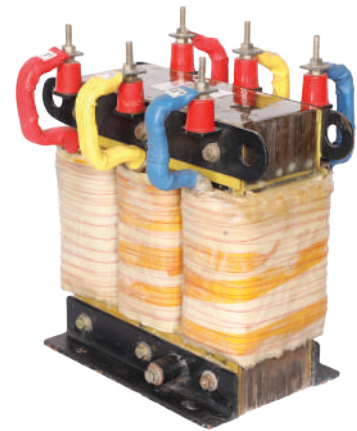


## Applications

KALPA offers a wide variety of Reactors, sometimes also known as Inductors or Chokes for multiple applications. A few among them are Filter Reactor, Detuned Reactor, Series Reactor, Input/Output Reactors. All the products are made as per Indian or International Standards (IS, IEC) or as per customer requirements/application. All the manufacturing, testing and evaluation facilities are available in-house.

## Our Range of reactors Include

- Detuned Reactor
- Series Reactor
- Input/Output Reactors
- Detuned Filter Reactor
- Air Core/Iron Core Reactors





## Applications

KALPA offers a complete line of Dry Type Single and three-phase transformers that meet applicable IS/IEC standards.

With high voltages up to 33k V and ratings up to 5 MVA, transformers are designed for indoor and outdoors covering domestic, international, commercial and industrial applications. High-grade materials, combined with sophisticated engineering design systems and state-of-the-art test infrastructure are key elements of a transformer that will deliver years of highly reliable service.

## Features

- Voltage Class up to 33 kV
- 1 Phase or 3 Phase
- Frequency 50/60 Hz
- Capacity up to 5 MVA
- Vector Group Dyn1 or Dyn5 or Dyn11 or any other connection
- Class of Insulation Class B/F/H with Temp Rise of 70/90/115Deg C or as per Customer Requirement
- Off Circuit or On Load. Tap Changer
- Tapping Range for OCTC or OLTC as per Customer Requirement
- Powder coated with RAL 7032 Shade or as per Customer Requirement
- Degree of protection IP 23, 43 or as per Customer Requirement

## Standard Fittings For

- H.V. Cable Box.
- L.V. Cable Box with Bus Bar or Bus Duct
- Off Circuit Tap Links
- Undercarriage with Four Bi-directional Rollers
- Earthing Terminals
- Rating and Diagram Plate
- Lifting Lugs for Complete Transformer
- Tapping Link Operation Door
- Enclosure with Louver Panels
- Canopy
- Base Channel - 2 Nos
- The Separate Neutral Bushing on LV Side
- Paint: Powder Coated with RAL7032 Shade

## Types

- VPI Transformer
- Cast Resin Transformer



## Optional Fittings

- RTD with A/T Contact
- Marshaling Box with Control Wiring
- On Load Tap Changer with RTCC Panel with AVR
- Forced Cooling Arrangement
- Neutral Current Transformer
- Space Heaters for Core & Windings





## Applications

KALPA offers a complete line of oil-cooled three-phase distribution transformers that meet applicable IS/IEC standards. With high voltages up to 33kV and ratings up to 10 MVA, transformers are designed for outdoors covering domestic, international, commercial and industrial applications. High-grade materials, combined with sophisticated engineering design systems and state-of-the-art test infrastructure are key elements of a transformer that will deliver years of highly reliable service.

- Design can meet any stringent specifications.
- Offering low losses as per request. As per IS1180/EEL - 1, 2 & 3 BEE STAR RATING.
- Capacity to execute large volume orders.

## Features

- Voltage Class up to 33 kV
- 1 Phase or 3 Phase, ONAN, KNAN
- 50/60 Hz Frequency
- Capacity up to 10 MVA
- Vector Group Dyn1 or Dyn5 or Dyn11 or any specific
- Insulating Fluid will be PCB FREE Mineral Oil, both Inhibited & Biodegradable FR3 Uninhibited, as per IS335/IEC60296, and Customer Requirement



- Insulation Class A
- Off Circuit or On Load Tap Changer
- Tapping Range for OCTC or OLTC as per Customer Requirement
- Applicable Standards IS 1180 ,IS 2026, IEC 60076, ANSI, IEEE
- Enamel, Epoxy, Polyurethane or Customer Specific Painting will be Provided

## Standard Fittings For

- H. V. Bushing
- L. V. Bushing
- Off Circuit Tap Changer
- Conservator Oil Filling Hole with Cap & Drain Plug
- Undercarriage with Four Bi-directional Rollers
- Earthling Terminals
- Drain cum Bottom Filter Valve with Sampling plug
- Top Filter Valve with Sampling Plug
- Plain Oil Level Gauge
- Rating Diagram Plate
- Air Release Device
- Thermometer Pocket
- Lifting Lugs
- Pressed Steel Radiators (Fins or corrugated type)
- Double Diaphragm Explosion Vent
- Silica Gel Breather
- Additional Neutral Bushing
- First Filling of Oil

## Optional Fittings

- Detachable Radiators with Isolating Valves
- Jacking Pads
- Dial Type Oil Temperature Indicator with A/T Contacts
- Dial Type Winding Temperature Indicator with A/T Contacts
- Magnetic Oil Gauge with A/T Contacts
- Buchholz Relay with A/T Contacts
- Marshaling Box with Control Wiring
- Equalizer Pipe between Conservator & Explosion Vent
- On Load Tap Changer
- RTCC Panel with Automatic Voltage Regulator (AVR)
- Pressure Release Valve
- DGPT Relay



# ⚡ SPECIAL PURPOSE TRANSFORMERS



Core Balancing Current Transformer



Split Core Current Transformer



SCM Current Transformer



Bus Duct Current Transformer



Laboratory Standard CT



Neutral Grounding Transformers

- Summation Current Transformer
- Interposing Current Transformer
- Auxiliary Voltage Transformer
- Interposing Voltage Transformer
- Residual Voltage Transformer
- High Frequency CT
- Rectifier Transformer
- Thyristor Duty Transformer
- Furnance Transformer
- Auto Transformer
- Earthing Transformer
- Inverter Duty Transformer
- 12/24 Pulse Transformer
- Booster Transformer

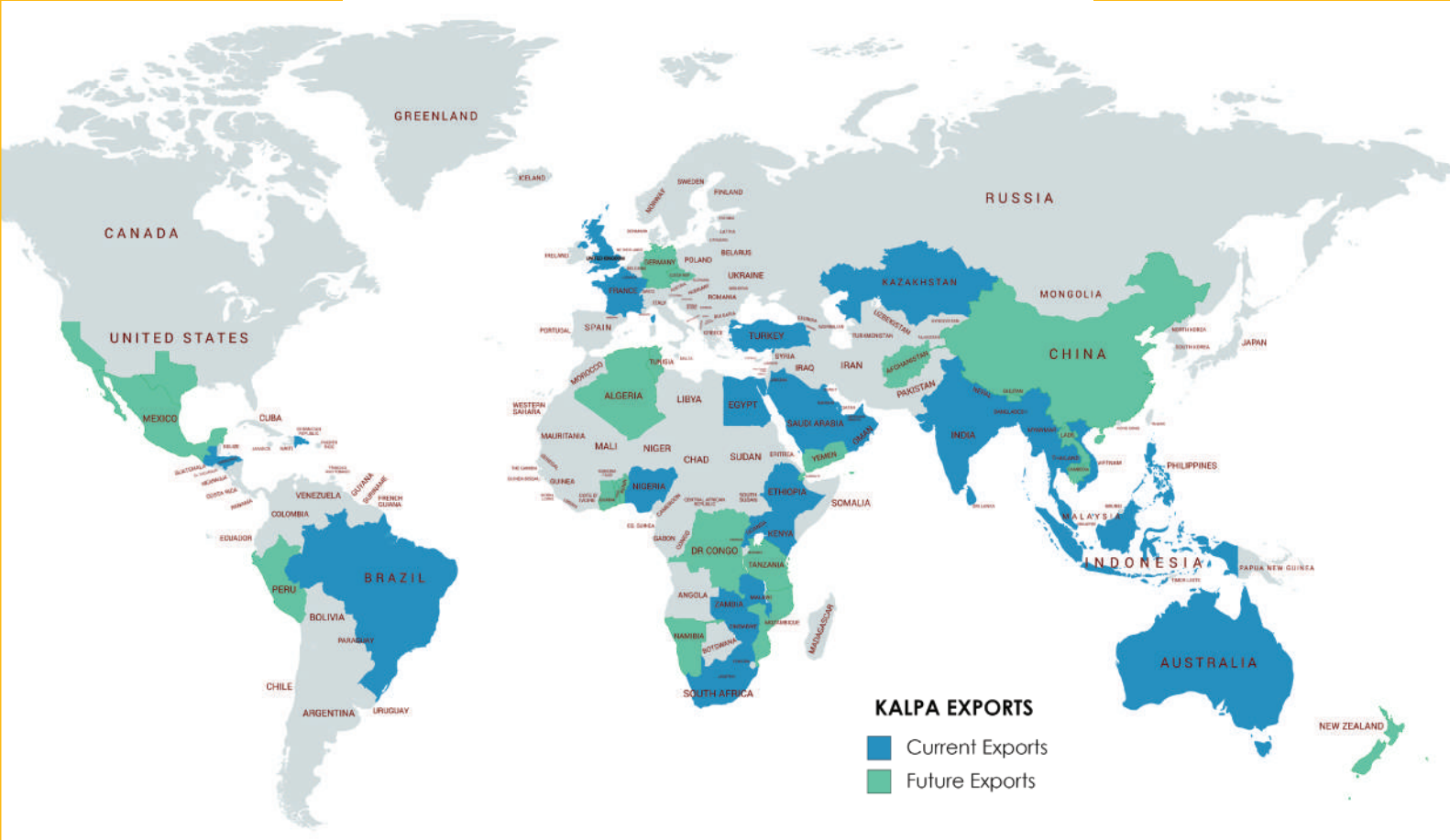




Our products are exported to over 40 countries, including United Kingdom, France, Singapore, Malaysia, Thailand, Vietnam, Sri Lanka, UAE, Kuwait, Saudi Arabia, Kenya, Nigeria, Zambia and so on. We export worldwide and are continuously expanding our network of dealers and agents all over the world and adding new destinations to our business. With the help of the focused exports division, our international marketing operations are streamlined and made efficient so that we have a minimum turnaround time on export orders.

Having been awarded by Engineering Export Promotion Council of India as **STAR PERFORMER** in Exports for Southern Region, we are fully geared to expand our horizons globally.

## GLOBAL PRESENCE



## EXPORT SERVICES:

**KALPA** brand has become synonymous with quality, premium service and innovation not only in the domestic market but also internationally. With increased production capacity, increased investment and upgradation of technology, **KALPA** is on its way to becoming an industry leader in design, manufacture and sale of a range of transformers in the segment.



# OUR HAPPY CUSTOMERS

Focusing on providing amazing Service, high Quality, reasonable Cost & faster Deliveries, we have built a brand of our own, the brand **KALPA**.

**SQCD = Happy Customers, that's the equation!**



## HEAD OFFICE

### KALPA ELEKTRIKAL PVT. LTD.

P.B. No. 4413, 149/25, III Main, Industrial Town, Rajajinagar, Bengaluru - 560010, Karnataka, India

**Tel:** +91-80-23303103, +91-80-23405248, +91-80-23356049

**Email:** sales@kalpaelectrikal.com **Website:** www.kalpaelectrikal.com

## EXPORTS

**Mob:** +91-9686644681, +91-7406512224, +91-9980039624

**Email:** exim@kalpaelectrikal.com  
masidda@kalpaelectrikal.com  
somashekar\_dm@kalpaelectrikal.com

## DOMESTIC

### KARNATAKA

9739672224 sales@kalpaelectrikal.com  
9945238615 sales.northkarnataka@kalpaelectrikal.com  
7406208844 marketing@kalpaelectrikal.com

### GOA

7406208844 sales.goa@kalpaelectrikal.com

### TAMIL NADU

9900059329 sales.chennai@kalpaelectrikal.com  
9538094567 sales.coimbatore@kalpaelectrikal.com

### KERALA

9538094567 sales.kerala@kalpaelectrikal.com

### AP & TELANGANA

9008364008 sales.hyderabad@kalpaelectrikal.com

### MAHARASHTRA

9900343368  
9606189494 mumbai.sales@kalpaelectrikal.com

### PUNE

9606799293 sales.pune@kalpaelectrikal.com

### MADHYA PRADESH

9606159494 sales.mp@kalpaelectrikal.com

### GUJARAT & RAJASTHAN

7406275554 sales.gujarat@kalpaelectrikal.com

### WB, ODISHA, CHHATTISGARH & NORTHEAST

8861188733 sales.kolkata@kalpaelectrikal.com

### BIHAR & JHARKHAND

9606799303 sales.bihar@kalpaelectrikal.com

### DELHI NCR, PUNJAB, HIMACHAL PRADESH, HARYANA, UTTARAKHAND & JAMMU KASHMIR

9972318984 sales.delhi@kalpaelectrikal.com

### UTTAR PRADESH

9606799596 sales.up@kalpaelectrikal.com